

# 6FM100HX 12V 100Ah(10hr)

The rechargeable batteries are lead-lead dioxide systems. The dilute sulfuric acid electrolyte is absorbed by separators and plates and thus immobilized. Should the battery be accidentally overcharged producing hydrogen and oxygen, special one-way valves allow the gases to escape thus avoiding excessive pressure build-up. Otherwise, the battery is completely sealed and is, therefore, maintenance-free, leak proof and usable in any position.



## Battery Construction

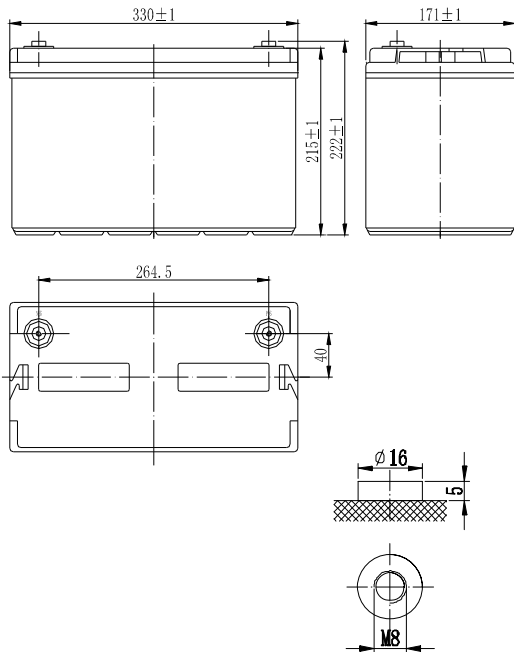
Component	Positive plate	Negative plate	Container	Cover	Safety valve	Terminal	Separator	Electrolyte
Raw material	Lead dioxide	Lead	ABS	ABS	Rubber	Copper	Fiberglass	Sulfuric acid

## General Features

- Absorbent Glass Mat (AGM) technology for efficient gas recombination of up to 99% and freedom from electrolyte maintenance or water adding.
- Not restricted for air transport-complies with IATA/ICAO Special Provision A67.
- UL-recognized component.
- Can be mounted in any orientation.
- Computer designed lead, calcium tin alloy grid for high power density.
- Long service life, float or cyclic applications.
- Maintenance-free operation.
- Low self discharge.

## Dimensions and Weight

Length(mm / inch).....330 / 12.99  
 Width(mm / inch).....171 / 6.73  
 Height(mm / inch).....215 / 8.46  
 Total Height(mm / inch).....222 / 8.74  
 Approx. Weight(Kg / lbs).....32 / 70.5



## Performance Characteristics

Nominal Voltage	.....12V
Number of cell	.....6
Design Life	.....10 years
Nominal Capacity 77°F(25°C)	
10 hour rate (10.0A, 10.8V)	.....100Ah
5 hour rate (17.6A, 10.5V)	.....88Ah
1 hour rate (64.8A, 9.6V)	.....64.8Ah
Internal Resistance	
Fully Charged battery 77°F(25°C)	.....4.5mOhms
Self-Discharge	
3% of capacity declined per month at 20°C(average)	
Operating Temperature Range	
Discharge	.....-20~60°C
Charge	.....-10~60°C
Storage	.....-20~60°C
Max. Discharge Current 77°F(25°C)	.....900A(5s)
Short Circuit Current	.....2200A
Charge Methods: Constant Voltage Charge 77°F(25°C)	
Cycle use	.....14.4-14.7V
Maximum charging current	.....30A
Temperature compensation	.....-30mV/°C
Standby use	.....13.6-13.8V
Temperature compensation	.....-20mV/°C

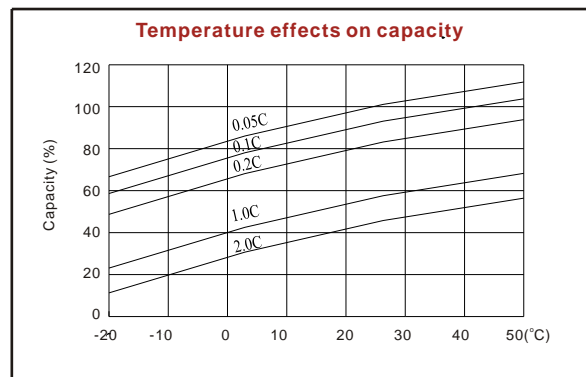
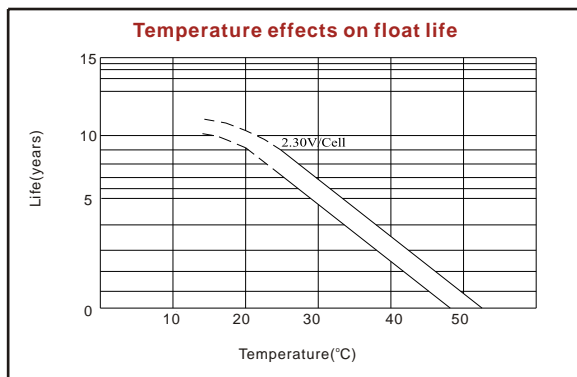
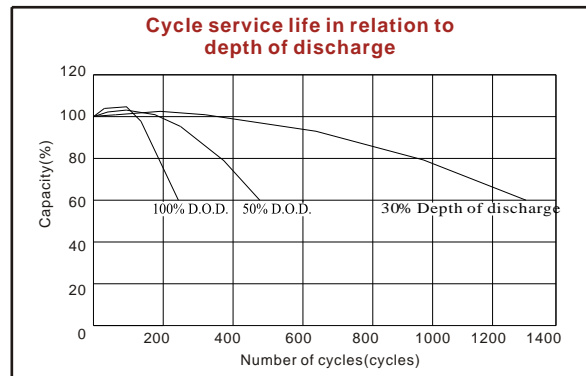
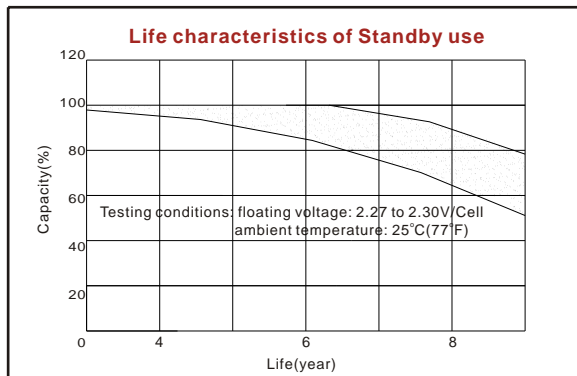
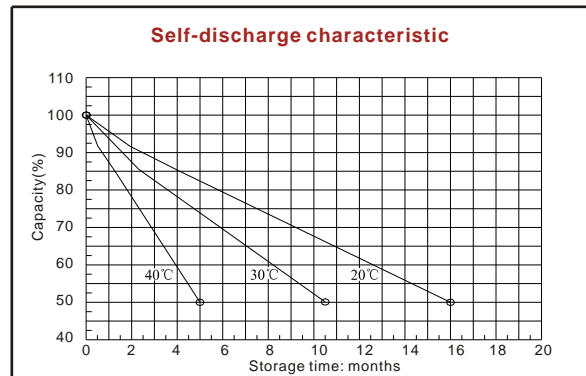
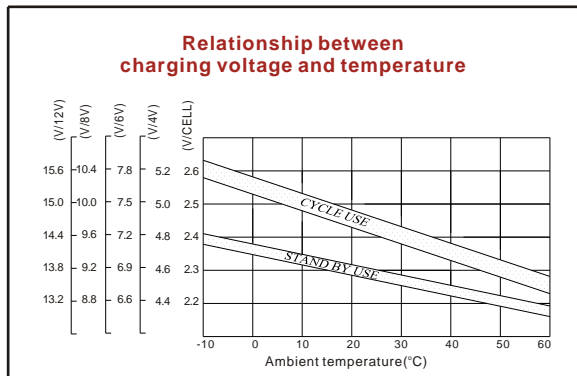
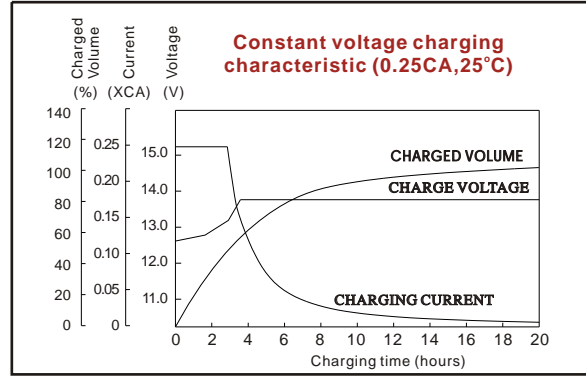
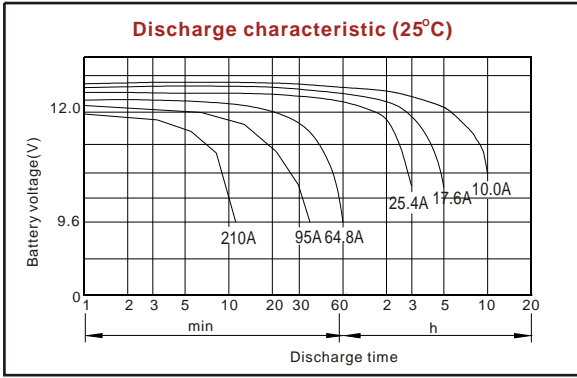
## Discharge Constant Current (Amperes at 77°F25°C)

End Point Volts/Cell	5min	10min	15min	30min	1h	3h	5h	10h	20h
1.60V	340	233	192	107	64.8	26.5	18.6	10.4	5.46
1.65V	312	218	182	104	63.7	25.9	18.3	10.3	5.43
1.70V	284	202	173	100	62.7	25.4	18.0	10.2	5.40
1.75V	255	188	161	96.5	61.6	24.8	17.6	10.1	5.35
1.80V	225	173	150	94.5	60.7	24.1	17.2	10.0	5.30

## Discharge Constant Power (Watts at 77°F25°C)

End Point Volts/Cell	5min	10min	15min	30min	45min	1h	2h	3h	5h
1.60V	579	406	332	202	147	129	72.5	51.1	35.7
1.65V	539	386	327	196	143	127	71.2	50.6	35.5
1.70V	498	365	316	190	140	126	69.9	50.0	35.3
1.75V	459	346	305	184	137	122	68.6	49.4	35.1
1.80V	418	324	294	178	134	118	68.0	48.5	34.7

(Note)The above characteristics data are average values obtained within three charge/discharge cycles not the minimum values.



ISO9001:2000

MH25860

G4M19906-9202-E-16

[www.vision-batt.com](http://www.vision-batt.com)

**Shenzhen Center Power Tech. Co., Ltd.**  
 Center Power Industrial Park, Tongfu Industrial District Dapeng Town, 518120 Shenzhen, China  
 Tel: (+86-755) 8431 8088 Fax: (+86-755) 84318038 E-mail: sales@vision-batt.com